

BIBLIOGRAPHY



BIBLIOGRAPHY

Ed. CIL (1992) Pre-School Education -

Vocational Textbook, New Delhi.

Ed. CIL (1992) Pre-School Education -

Vocational Workbook, New Delhi.

Gupta, R. & Rahgir, S.P. (1984) A comparative study of routine and modified Anganwadi under ICDS in selected block, Institute of Home Science, Agra University, Agra.

Lal S. and Rajwati, (1981) Early childhood Education, An effect of enhancing school enrolment, Department of Preventive and Social Medicine, Medical College, Rohtak, Haryana.

Murlidharan, R. (1972) Development Norms of Pre-school children, NCERT, New Delhi.

Murlidharan R. (1972) Bringing Continuity between the stage of Education Viz. Pre-school and primary school DPSEE, NCERT.

Murlidharan R. (1975) and Banerji, V. Impact of pre school education on school readiness of Underprivileged children, International Journal of Early Childhood Education.

M.H.R.D. (1986) Govt. of India, National Policy on Education, New Delhi.

M.H.R.D. (1992) Govt. of India, Programme of Action.

M.H.R.D. (1996) Report of the National Workshop on Early Childhood Development, New Delhi.

NCERT (1991) SHISHUON KE LIYE PRERAK GATIVIDHIYAN, New Delhi.



NCERT (1996) School Readiness, New Delhi.

NCERT (1996) PRARAMBHIK BAL SHIKSHA KARYAKRAM, New Delhi.

NCERT (1997) Pressures on Pre-schoolers, New Delhi.

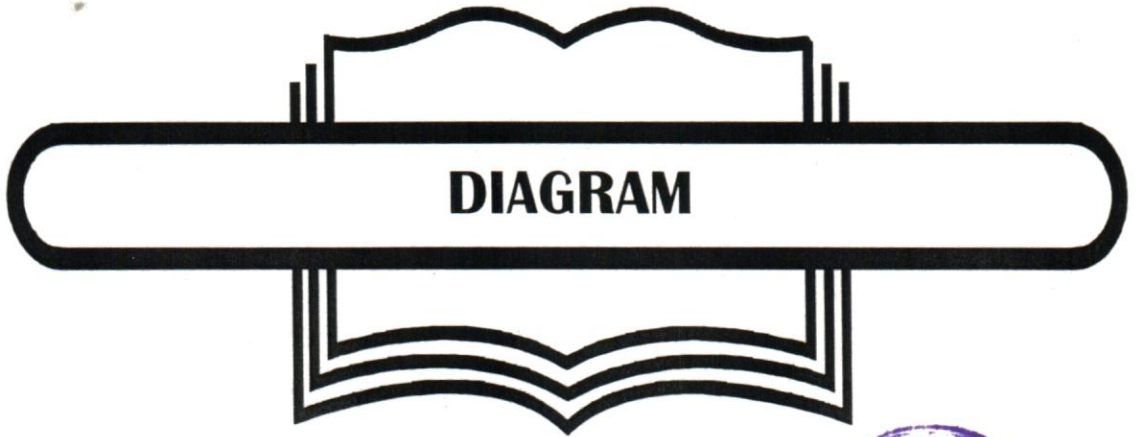
NCERT (1997) Report of Seminar for professional organization for Advocacy in ECE. DPSEE, New Delhi.

NCERT (1992) Fifth Survey of Educational Research (1988-92) Vo.-1, New Delhi.

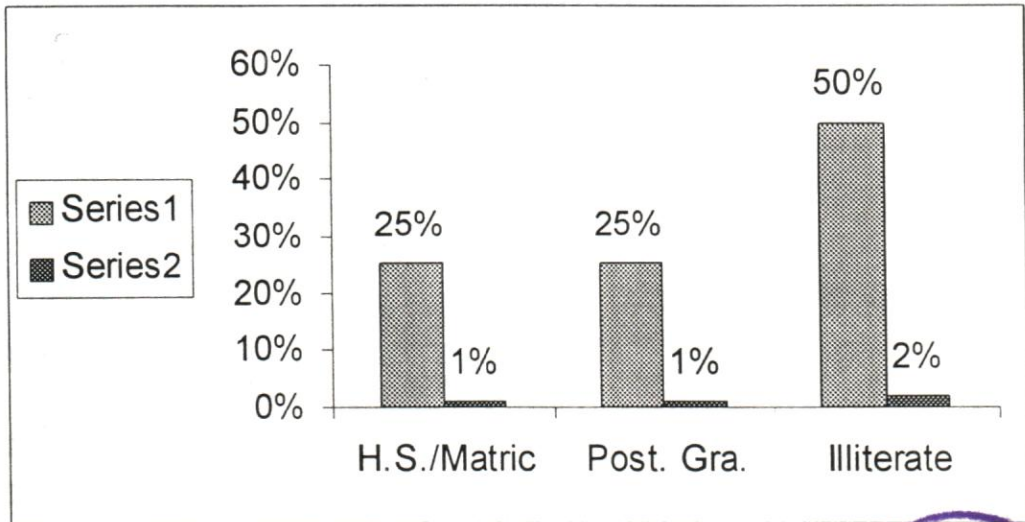
Sen Gupta, M. (1999) Sample Activity plans for Early Childhood Education, RIE, Bhopal.

Upadhyay, G.C. (1999) Pre-school Education component of ICDS and its perception and Extent of Utilisation by the Community- A study in Delhi, NCERT, (DPSEE), New Delhi.

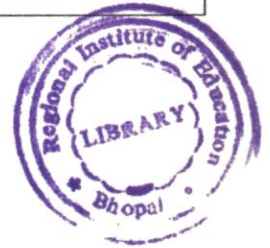




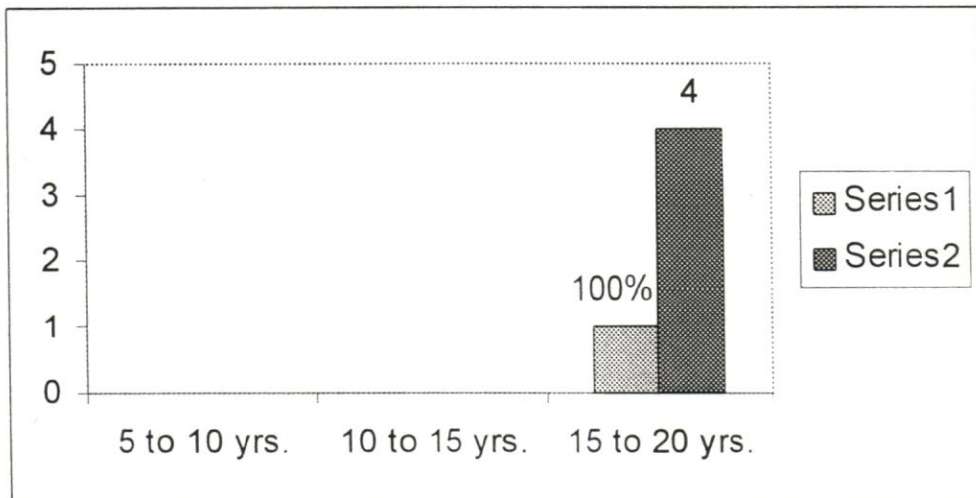
Fig; 01



Bar Diagram showing
Qualification of Anganwadis Workers
(See on Page No. 50)

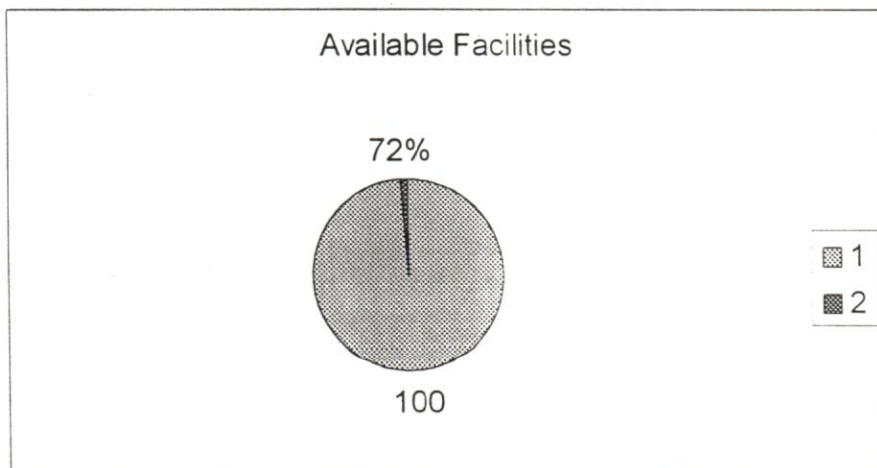
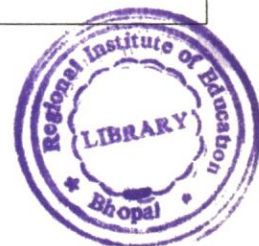
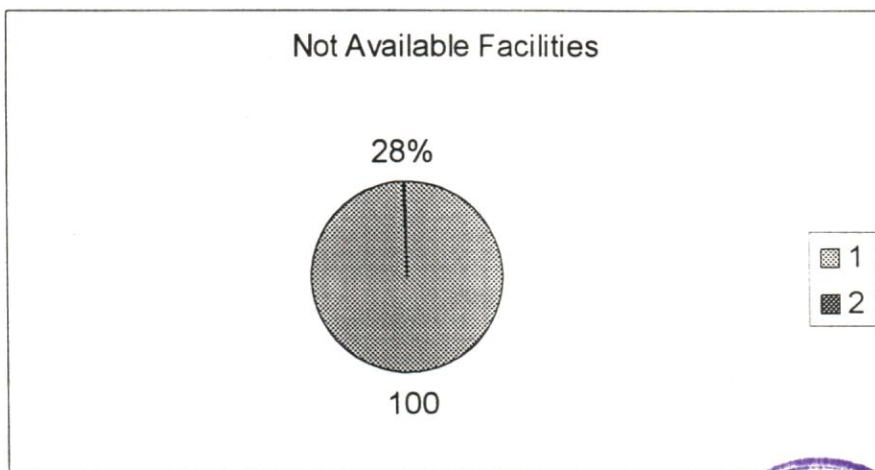


Fig; 02



Bar Diagram showing
Experience of Anganwadis Workers
(See on Page No. 50)

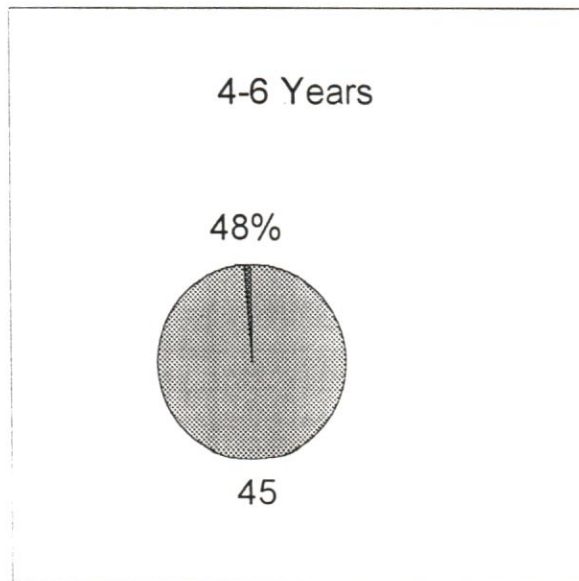
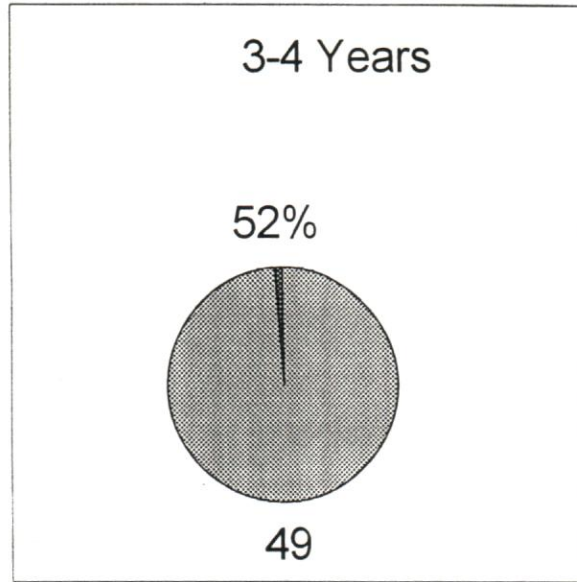
Fig: 03



Pie Chart showing
Not available Facilities and Available Facilities
in the Anganwadis

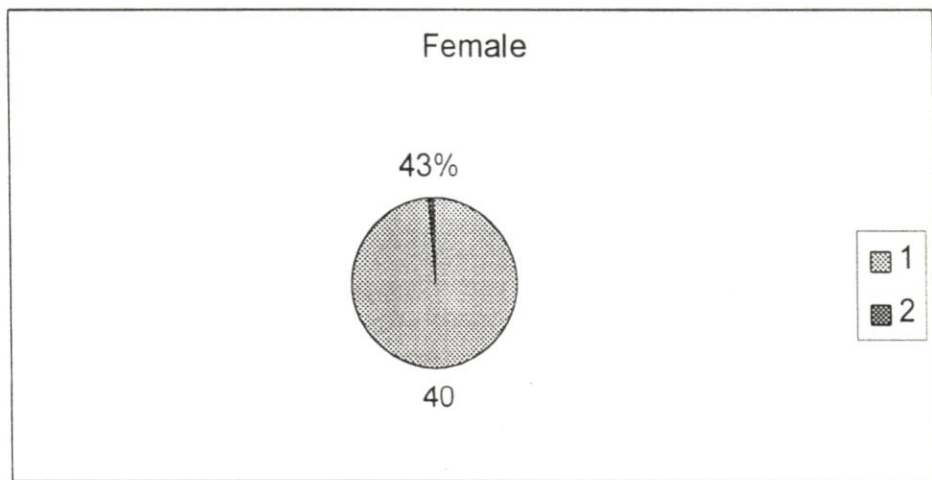
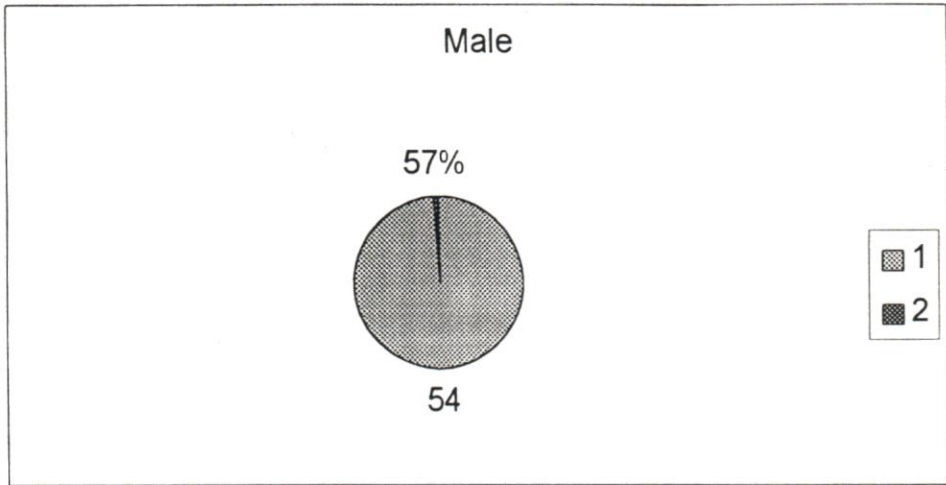
(See on page No. 52)

Fig: 04



Pie Chart showing
Agewise distribution of Anganwadi Children
(See on page No. 56)

Fig; 05



Pie Chart showing
Sexwise distribution of Anganwadi Children
(See on Page No. 56)

